



# THERMALWELD<sup>®</sup> PLUS

Vinyl  
**PATIO  
DOORS**



[polariswindows.com](http://polariswindows.com)

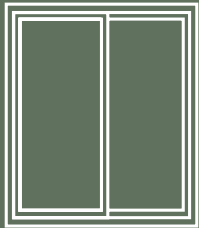
## CUSTOM SIZES

two panel widths - 55" to 95 1/2"

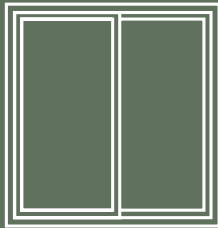
three panel widths - 95" to 142 7/8"

max height - 84"

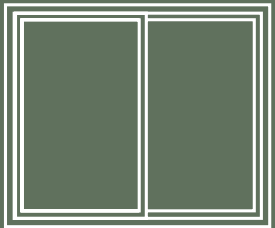
## STANDARD SIZES



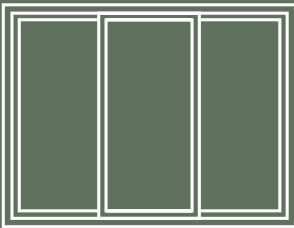
5'0" x 6'8"



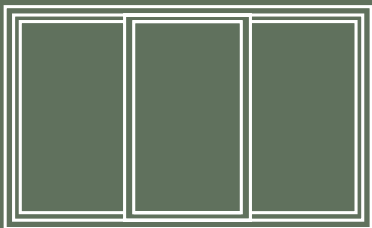
6'0" x 6'8"



8'0" x 6'8"



9'0" x 6'8"



12'0" x 6'8"

## OPEN + SHUT

How would you like your door to operate as viewed from outside?

Two panel - left or right panel glides

Three panel - center panel glides left or right

# ENERGY EFFICIENCY

## Ease of Operation + Ownership

### FEATURES + BENEFITS

Fusion welded frame and sash corners.

Aluminum rebar in interlock stiles and lock stile.

Stainless steel roller track.

Additional lock point with kick lock allows secure partial opening.

Foam filled main frame extrusions.\*

Door panels interlock and meet at main frame with weather-stripping.

Ask about ENERGY STAR® qualified glass package upgrades.

### BENEFITS OF VINYL

Vinyl formulation retains its smooth surface and color.

When measuring the rate of heat flow through a patio door; vinyl performs as well or better than framing materials like wood or aluminum.

Your pristine Polaris patio door will be energy efficient and maintenance free for a lifetime.

### SCREEN

Our extruded aluminum screen frames are stronger than roll formed frames.

Fiberglass screen standard.

See back for more screen options.

### EXTERIOR PAINT\*

Unique, high-performance exterior coating specially formulated for PVC

Semi gloss finish • Color matched contour internal grids, caulk & coil‡ options

Crack & impact resistant • Touch-up paint included • Lead time 4-6 weeks

FGIA testing ensures that coating resists strong solvents, heat gain and thermal shock

‡ Muntin color may be affected by glass coatings, such as Low-E. Coil not exact match.



\*options



# VINYL PATIO DOOR | LIMITED LIFETIME WARRANTY |



Handle



Threshold



Handle Set  
with Key Lock



Foot operated dead bolt provides an extra lock point for secure partial opening.



## DECORATIVE GLASS\*

Designs



colonial prairie style double prairie style diamond n/a contour or brasses

## INTERNAL MINI BLINDS\*



alabaster white tan silver gold black

## HANDLE SETS FINISHES\* w/ exterior key lock



Exterior painted doors: Exterior hardware supplied is same color / finish as interior hardware.

## Internal Grid Styles



view glass 3/8" v-groove, interior surface of glass unit pane

smooth contour antique brass satin nickel slim line brass view floral view elongated floral view arch view

## WINDOW & MUNTIN COLORS\*

Vinyl

Interior Woodgrain Laminate



white standard tan medium oak dark oak cherry vintage pecan

Exterior Laminate n/a dark oak interior laminate  
20 Year Warranty against fading, peeling or blistering



wicker choco brown bronze coal black

Colors shown are reproduced by mechanical process and may vary from actual colors of product. Use actual color selectors.

## SCREEN HANDLES



1350 heavy extrusion STANDARD

1580\* heaviest extrusion mortised with lock

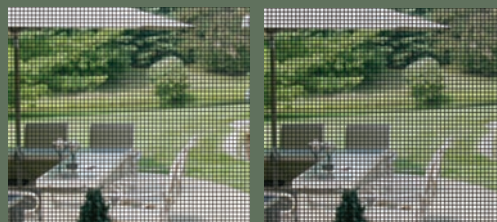
## MORTISED HOOK LOCKS



STANDARD single point

two point\*

## SCREEN OPTIONS



**BetterVUE® Screen Mesh Better Insect Screen**  
10% Better Insect Protection  
20% Better Airflow  
20% Clearer View

**Standard Screen Mesh**  
Sight more obstructed  
Less Airflow than BetterVue Screens  
Proven and Reliable

## PET SCREEN



- Resists damage by dogs and cats
- Excellent outward visibility
- Made of strong vinyl-coated polyester
- Not harmful to pets
- Easy to install

## LIFETIME LIMITED TRANSFERABLE WARRANTY & SERVICE

We proudly stand behind the quality of our products. In the rare event that your product would need service, our factory trained service professionals are solely dedicated to serve you.

## RESEARCH & DEVELOPMENT

Polaris products are scrutinized under extreme weather and structural stresses at the Polaris in-factory testing facility. Our R&D Department ensures that our products feature the latest industry innovations. Top quality and integrity are guaranteed.

## ACCORDING TO THE U.S. DEPARTMENT OF ENERGY,

Windows could account for 10 to 25% of a home's energy bill. Using ENERGY STAR® windows manufactured with Low-E glass and argon gas to replace your single pane clear glass windows will reduce energy consumption.

## ENERGY EFFICIENT GLASS

energySMART® upgrades offer stronger resistance to temperature transfer, reduce ultra violet light damage and heat gain. Upgrades are ENERGY STAR qualified. Ask for an energySMART® brochure.

## MORE GLASS OPTIONS

Bronze or Gray tint

Low-E film fixed between glass panes reduces ultra violet light damage & heat gain. Argon filling in both air spaces resists temperature.

**Ask About Our Glass Breakage Warranty**



SCAN CODE to head to our Digital Brochure!



©2025 ThermalWeld Plus® and energySMART® are registered trademarks of Polaris® Windows and Doors OH, USA. All other trademarks are property of their respective owners. Stock Photography is used in this brochure. These photographs are not exact replicas of Polaris® Windows & Doors products.

\*options

LT256 2025\_01\_3M