

MASTIC[®]
by  **Ply Gem**



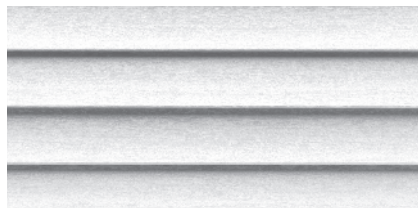
CARVEDWOOD•44[®]
VINYL SIDING

MAKE MORE POSSIBLE.



This page: Carvedwood•44® in White

Cover Image: Carvedwood•44® in Misty Shadow



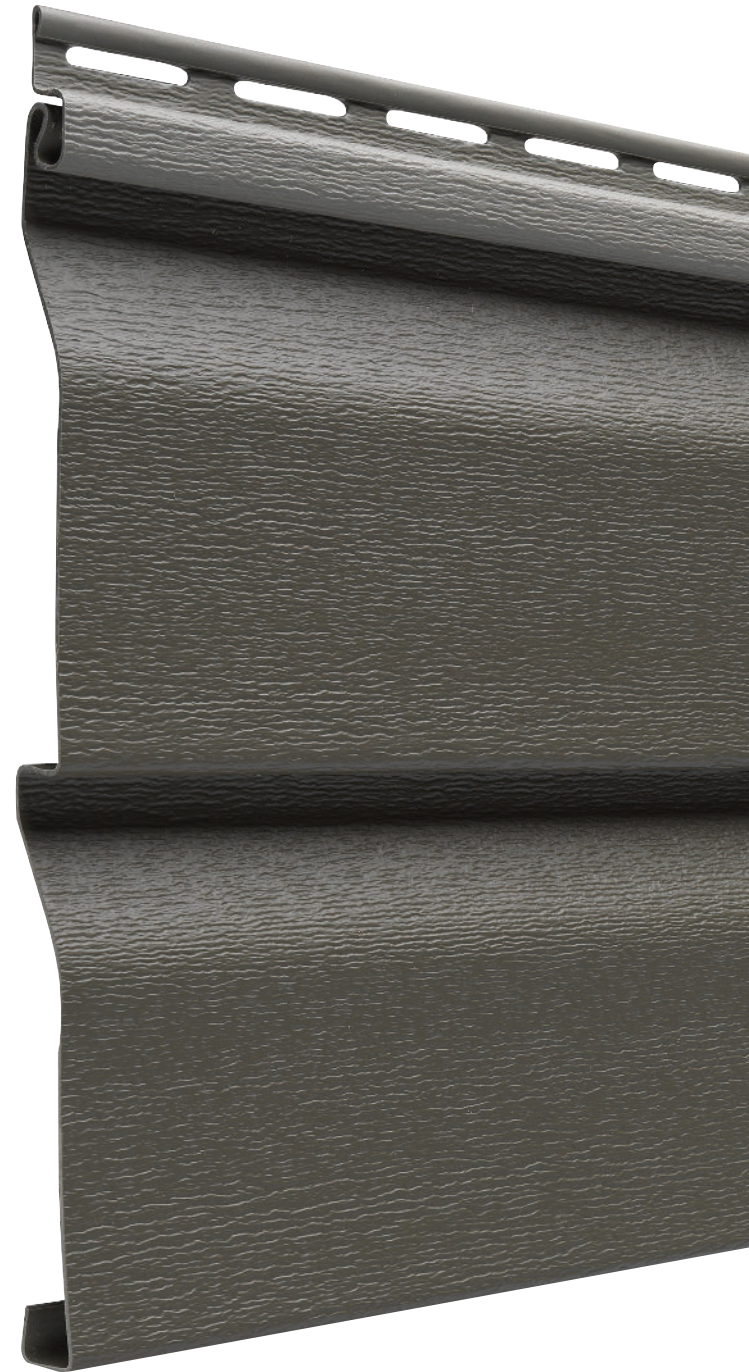


CARVEDWOOD•44®

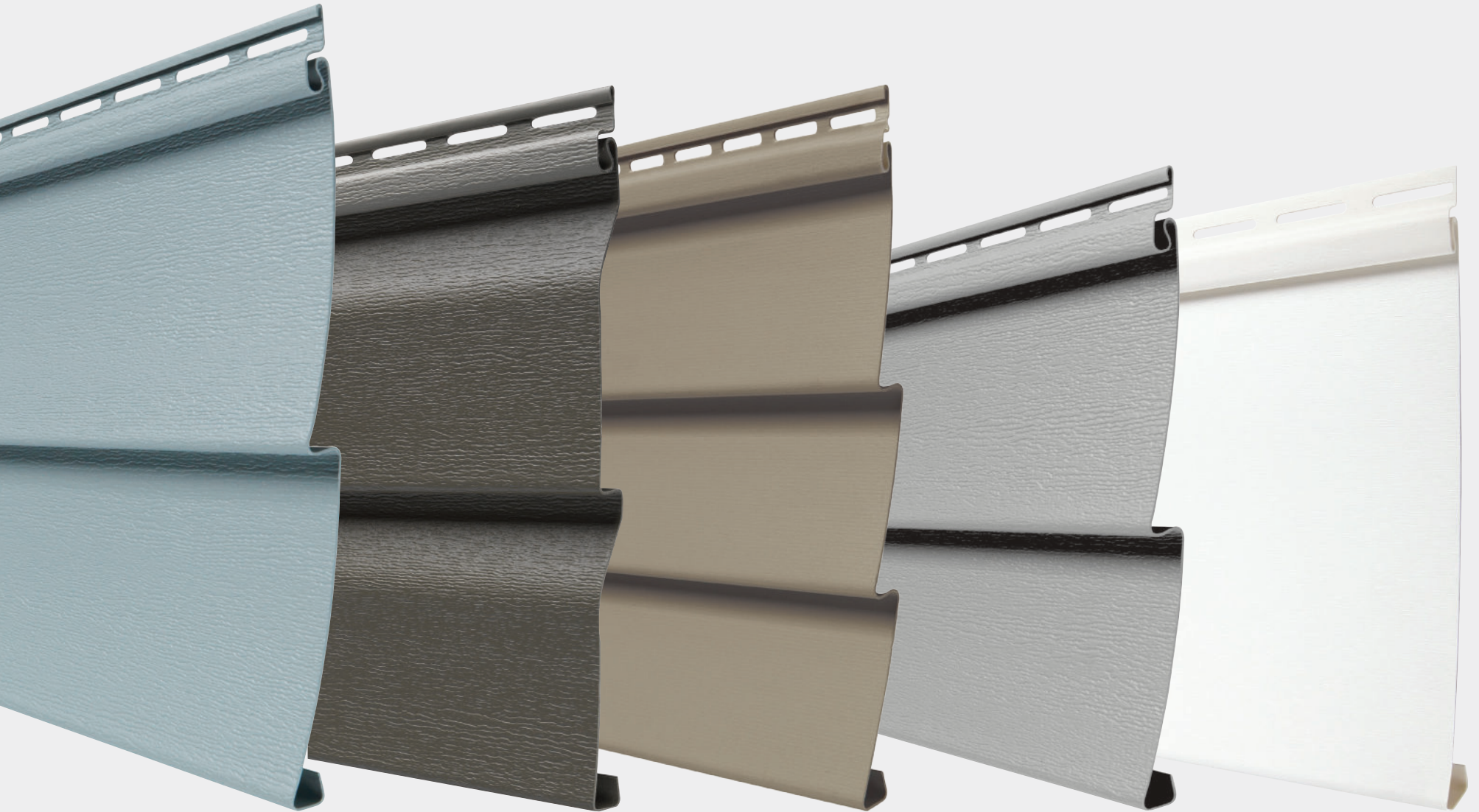
VINYL SIDING

Designed for beauty. Engineered to last.

Carvedwood•44® delivers strength, durability, the beauty of real wood and endless design options. Offered in 40 stunning colors, five distinct profiles and two attractive finishes, smooth and woodgrain, Carvedwood•44 is the ideal choice for a virtually maintenance-free home exterior.



CARVEDWOOD•44
PROFILES



D5

**DOUBLE 5"
TRADITIONAL LAP**
Woodgrain

DL

**DOUBLE 4-1/2"
DUTCH LAP**
Woodgrain

T3

**TRIPLE 3"
TRADITIONAL LAP**
Smooth

D4

**DOUBLE 4"
TRADITIONAL LAP**
Woodgrain

S8

**SINGLE 8"
TRADITIONAL LAP**
Smooth



.044" NOMINAL THICKNESS

Superior thickness and impact resistance.



WIND VELOCITY — RATED UP TO 153 MPH*

MIAMI-DADE COUNTY
APPROVED

Standard wind load design pressure (DP) up to 56 PSF & wind velocity rated up to 153 mph.*



T-2 LOK®

Locking system delivers a positive locking action with a wider locking mechanism for more contact area.†



ROLLOVER, REINFORCED NAIL HEM†

Easier installation — more precise and secure fastening.



5/8" PANEL PROJECTION

Enhanced shadow lines replicate the appearance of real wood panels.



HANG-TOUGH™ TECHNOLOGY

Exclusive formulation and process boosts durability so panels are more resistant to cracking, impact and thermal distortion. As an added benefit, rich color resides throughout the panel — virtually eliminating the appearance of nicks and minor surface scratches.



DURANYL® 5000 PROTECTION SYSTEM

Proprietary technology adds extra UV protection to our deepest, most vivid colors — protects color against harsh elements and maximizes long-term weatherability.



BREATHE EASY

Cutting does not produce harmful silica dust which can cause lung disease.



SUSTAINABLE

Crafted of readily available natural materials — our vinyl siding is safe, sustainable and recyclable.



CLASS 1(A) FIRE RATING

*Tested in accordance with ASTM D5206. Wind speed rating will vary depending on specific code region and construction method. Refer to local building codes for detailed requirements concerning allowable wind loads and specified conversion tables for actual wind speeds. Example wind velocity for 56 PSF is 153 MPH Zone B @ 30' building height.

†Single 8" panel features a unique, advanced locking system and nail hem.

CARVEDWOOD•44

COLOR KEY

LIGHT COLORS	D5	DL	T3	D4	S8
Almond	●	●	●	●	
Cameo	●	●	●	●	
Classic Cream	●	●	●	●	
Colonial Yellow	●	●	●	●	
Desert Sand	●	●	●	●	
Linen	●	●	●	●	
Sage	●	●		●	
Sandtone	●	●	●	●	
Silver Grey	●	●	●	●	
Tuscan Olive	●	●	●	●	
Victorian Grey	●	●	●	●	
Wicker	●	●	●	●	
White	●	●	●	●	●

PREMIUM DEEP COLORS	D5	DL	T3	D4	S8
Autumn Harvest		●		●	
Bayou		●		●	
Brunswick		●		●	
Deep Granite	●	●	●	●	
English Wedgewood	●	●	●	●	
Lakeshore Fern		●		●	
Misty Shadow		●		●	
Modern Iron		●		●	
Montana Suede		●	●	●	
Quiet Willow	●	●	●	●	
Rugged Canyon	●	●	●	●	
Russet Red		●		●	
Vintage Dublin		●		●	

CLASSIC COLORS	D5	DL	T3	D4	S8
Corn Silk	●	●		●	
Everest	●	●	●	●	
Harbor Grey	●	●	●	●	
Pebblestone Clay	●	●	●	●	
Scottish Thistle	●	●	●	●	

OUR MOST LUXURIOUS COLORS FEATURE SOLARDEFENSE REFLECTIVE TECHNOLOGY™

Whatever architectural style you prefer will be enhanced with lap siding in deep, rich luxurious colors. And with SolarDefense Reflective Technology, you don't have to worry about fading or distortion because each board is engineered to resist the sun's harshest UV rays. So go ahead, splurge on one of these deep hues you've always wanted, knowing they'll stay looking fresh and dreamy for years to come.

SOLARDEFENSE COLORS	D5	DL	S8	D4	T3
Alpine Forest		●		●	
Brandy Wood		●		●	
Deep Cavern		●		●	
Natural Slate		●		●	
Newport Bay		●		●	
Red Brick		●		●	
Rock Harbor		●		●	
Whispering Timber		●		●	
Woodland Retreat		●		●	

Due to printing limitations, colors may not be exactly as shown. Refer to actual sample and color chips for best match.



SolarDefense
REFLECTIVE TECHNOLOGY™

BEST IN CLASS

**V.I.P. LIMITED
LIFETIME
WARRANTY**

**NO FADE
NO DISTORTION
PROMISE™**



TOP LAYER

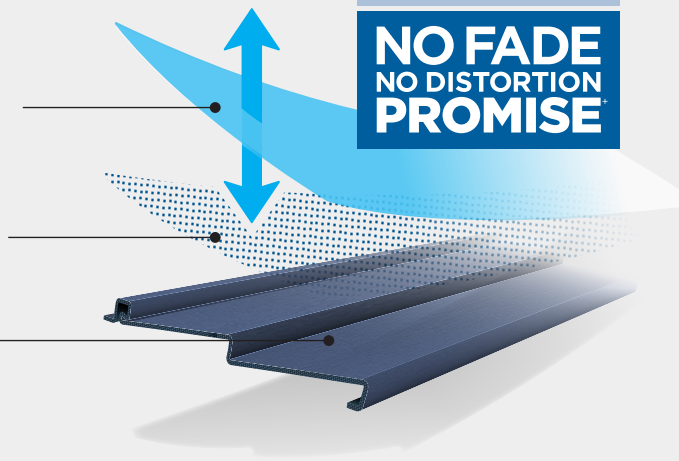
Disperses heat and helps resist fading by allowing light energy to flow both ways.

COOLING COMPOUND

Scatters light, reflecting heat away, keeping panels cooler.

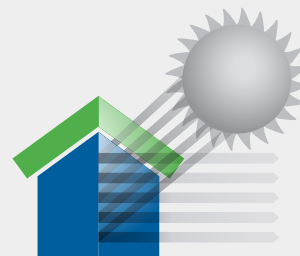
BASE LAYER

Stands up to heat, preventing distortion.



THE BEST PROTECTION FOR THE BOLDEST COLORS

Engineered to absorb less of the sun's heat, our newest, darkest colors are designed to resist fading and heat distortion better than ever. Our tough UV-stable polymer stands up to damaging rays. New cooling compounds scatter more light to reflect more heat away from the siding, and keep panels cooler even on the hottest days. SolarDefense Reflective Technology is so effective at protecting our boldest, darkest colors from the sun that we back it with an unmatched No Fade, No Distortion Promise.*



**SOLARDEFENSE PANELS
REFLECT UV RAYS TO PREVENT
FADING AND DISTORTION.**

+ Warrantied against (i) fade in excess of a Delta E of 1 Hunter unit and (ii) heat distortion from normal climate conditions or normal reflective light sources. See product warranty for details and terms and conditions.

ALPINE
FOREST

BRANDY
WOOD

DEEP CAVERN

NATURAL
SLATE

NEWPORT
BAY

RED
BRICK

ROCK
HARBOR

WHISPERING
TIMBER

WOODLAND
RETREAT

VINYL SIDING DELIVERS WHAT HOMEOWNERS WANT.

MOST IMPORTANT FACTORS IN SIDING MATERIAL ACCORDING TO HOMEOWNERS:

DURABILITY	45%
COST OF MATERIAL	34%
VISUAL APPEARANCE	32%
WARRANTY	27%
BRAND	25%
RESISTANCE TO WATER	25%
LITTLE TO NO MAINTENANCE	25%
COST OF LABOR	20%
INSULATION	18%

Source: Ply Gem primary research, December 2020



DURABILITY

If you're looking for siding that is durable and low maintenance, and looks beautiful, Carvedwood•44 siding is the ideal choice. Carvedwood•44 will enhance your home's appearance today — and for years to come.



COLOR AND TEXTURE

Featuring a realistic wood grain, Carvedwood•44 is available in a wide range of shades, including bold, dark colors backed by our SolarDefense Reflective Technology™. SolarDefense is engineered to absorb less of the sun's heat, our newest, darkest colors are designed to resist fading and heat distortion better than ever. Our tough UV-stable polymer withstands to damaging rays. New cooling compounds scatter more light to reflect more heat away from the siding, and keep panels cooler even on the hottest days.



LIFETIME WARRANTY

Carvedwood•44 vinyl siding is backed by our V.I.P. Limited Lifetime Warranty, which covers against manufacturing defects, excessive fading and hail damage for as long as you own your home. To protect your investment, the warranty is transferable in the event you sell your home (see warranty for details).



THIRD-PARTY TESTED FOR QUALITY

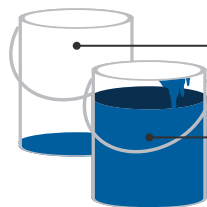
Mastic vinyl siding products are certified through the Vinyl Siding Institute (VSI), which sponsors third-party certification to ensure vinyl siding quality. Mastic vinyl siding meets or exceeds ASTM D3679 performance standards for impact resistance, weatherability, product thickness and performance in extreme conditions — all requirements in the VSI certification program.*

*Consult the VSI website at polymericexteriors.org for a current list of certified products and colors.



NEVER NEEDS PAINTING OR STAINING

Unlike wood, stucco or fiber cement, Carvedwood•44 vinyl siding never needs painting or staining, which saves you time and money year after year.



COMPARE MAINTENANCE COSTS

Carvedwood•44: \$5
(just soap and water)

Other cladding options: up to \$6,000
(Based on typical prep, caulking and repainting of the average home)

WE TEST OUR VINYL SIDING RIGOROUSLY & RELENTLESSLY.

OIL CAN TEST

Siding panels are placed under heat strips and saturated to 120° — 140°F to make sure the siding doesn't warp or buckle.

WEATHERING

Color retention (resistance to fading) is tested by subjecting Mastic products to real-time weather conditions and accelerated UV testing. This ensures that Mastic products will hold up in the most extreme environmental conditions.

RIGIDITY

Panels are designed and engineered to be more rigid so the siding remains straight on the wall.

COLOR READ TEST

Using a spherical spectrophotometer, a 10,000-watt xenon flash tube bounces light off a siding panel. This information is then analyzed to determine if the color falls within accepted ranges for color consistency and match.

VERTICAL HEIGHT IMPACT TEST

Measures the product's durability and ability to resist impact forces — the result of proper thickness, formulation and impact modifiers.

GLOSS TEST

A digital readout microgloss meter is used to scan siding to determine if its gloss falls within a target range. Gloss is important to the aesthetic appeal of the siding.

A HEALTHY HOME STARTS WITH THE BASICS

You want the best health for your family — and that starts at home. We offer a full line of coordinating accessories so your home can be healthy from the outside in.



WHY DOES VENTILATION MATTER?

Vents protect your home from heat and moisture buildup and keep fresh air moving. Sturdy and well-built, Ply Gem vents are specially engineered to deter insects, birds, and other animals. They're easy to install on all types of siding and come in hundreds of colors and a variety of designer styles. Best of all, Ply Gem vents are constructed of high-performance, long-lasting vinyl ensuring a lifetime of low maintenance.



UTILITY VENTS

Sturdy utility vents provide excellent cross-ventilation for garages, foundations, and range hoods. The louvered exhaust vent is ideal for removing moist air from dryers and bathrooms. Intake louvers and soffit intakes work in tandem with the vents to maximize airflow, helping your family breathe easier. With our utility vents, your home not only looks beautiful but also feels fresher.



GABLE VENTS

Typically installed at the peak of a roof, gable vents promote proper airflow in your attic. Ply Gem gable vents provide maximum ventilation and feature a special snap-on system for easy installation and cleaning. Whether you prefer your gable vents to blend seamlessly with your siding or stand out as a decorative accent, you'll find a variety of stylish options.



VENTURA® HIDDEN VENT SOFFIT

Sculpted in clean lines and smooth surfaces, Ventura Hidden Vent Soffit features a contemporary, long clear span design. It allows 50% more airflow, reducing utility bills and preventing mold and mildew damage.

Mastic by Ply Gem is part of the Ply Gem portfolio of brands and product lines, delivering the industry's most comprehensive line-up of designed exterior solutions—all meant to work together seamlessly to elevate curb appeal and provide enduring beauty to homes.



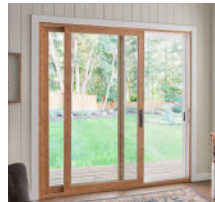
PART OF THE **Ply Gem[®]** PORTFOLIO OF TOTAL DESIGNED EXTERIORS



SIDING



WINDOWS



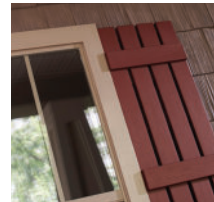
**PATIO
DOORS**



**STONE
VENEER**



**FENCE &
RAILING**



SHUTTERS



TRIM



METAL



ACCESSORIES



VISUALIZE YOUR TRANSFORMATION

Are you ready to see what's possible for your home? With our Ply Gem® Home Design Visualizer tool, it's easy to begin designing your dream home. Bring your vision to life at mastic.com/visualizer.

GET STARTED

Simply snap a photo and go, or jump-start your imagination with some of our sample homes.

ADD COLOR + VISUALIZE

Explore expert insights on color and accents that will broaden your perspective on what's possible with your home exterior.



MASTIC[®]

by  Ply Gem

MAKE MORE POSSIBLE.

Mastic by Ply Gem is backed by the resources and reach of Cornerstone Building Brands, the nation's largest manufacturer of exterior building products, and supported by a team of dedicated professionals who provide an unrivaled level of experience and expertise to our nationwide network of distributors.



We reserve the right to alter, modify or delete items from time to time without notice. Due to printing limitations, colors may not be exactly as shown. Contact your distributor or sales representative for actual product and color samples.

MASTIC.COM | 800-962-6973
5020 Weston Parkway, Cary, NC 27513

© 2025 Mastic Home Exteriors Inc, part of **Cornerstone Building Brands, Inc.**
ALL RIGHTS RESERVED. 7601094031101/RevF/MS/IMG/0325



PART OF THE CORNERSTONE BUILDING BRANDS FAMILY | SIDING | WINDOWS + DOORS | SHUTTERS | METAL, TRIM + ACCESSORIES | STONE VENEER | FENCE + RAILING